

Medium Hip Hop

Voice

The World Today

112 bpm

Jesse Forest

Am11 Gm11 Am11 Gm11

Am7 Gm7 Am7

6 With so much wrong in the world to-day Don't know where to turn It's been so hard

Gm7 Am7 Gm7

9 Try-in' find a way Through war and suf-fer-ing Ev-ry-where All the pain we

Am7 Gm7 Abmaj7

12 Feel I must be-lieve That there's hope For us I've been search-ing so

Ebmaj7/G Fm7 Ebmaj7

15 long Look-ing Ev-ry-where Tryin' to find My piece of mind

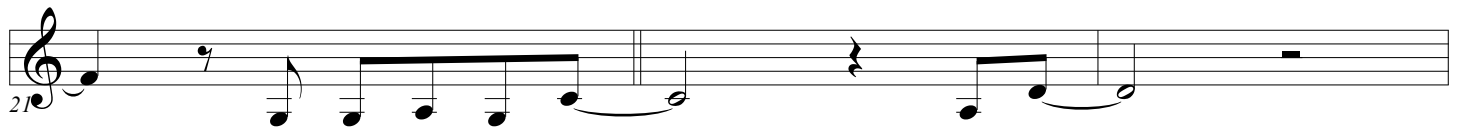
Abmaj7 Ebmaj7/G Fm7

18 And when I feel al-one I can look a-bove And I be-lieve

E^bmaj7

Dm9

Em7



I look to the light

That shines

Fmaj7

G7sus4

Dm9



I know that you'll be there

I fo-llow the light

That shines

Em7

Fmaj7

G7sus4



I know I'll find my way

You'll take me home

A^bmaj7(#11)A^bmaj7(#11)

Am11



and I won't have to cry

Gm11

Am11

Gm11



Am11

Gm11



⊕ Am11

Gm11

Am11

Gm11



Am7

Bm7

Cmaj7

C[#]dim7

Dm7

Gmaj9

